



MONTHLY MEMBERSHIP PROGRESS REPORT

District 3231A2

Results as of: 06/30/2018

GMT: JAYESH THAKKAR

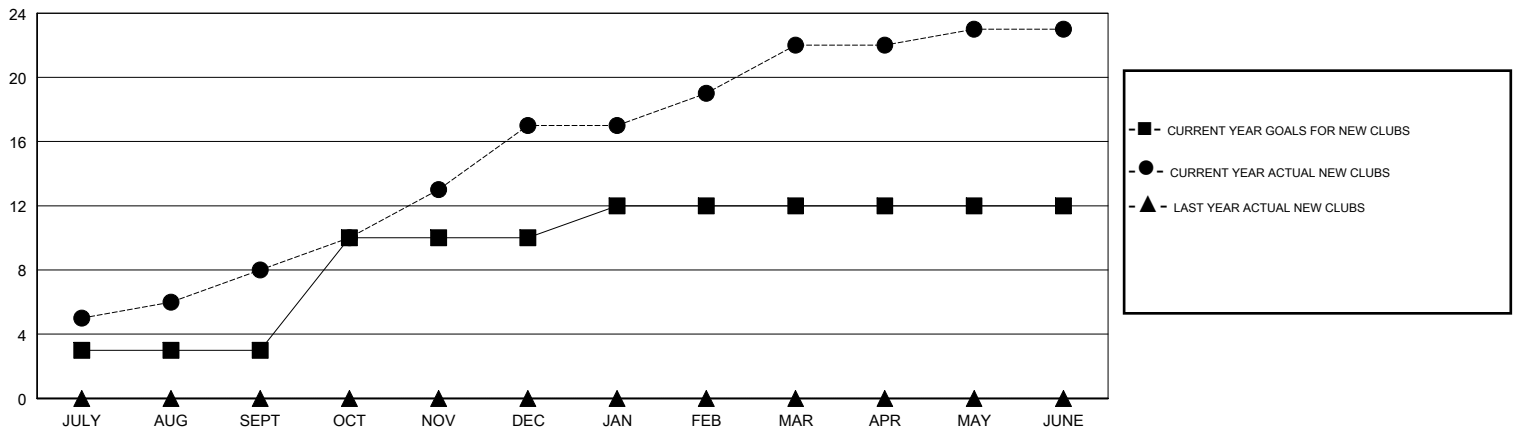
LOCATION INDIA

GMT CA

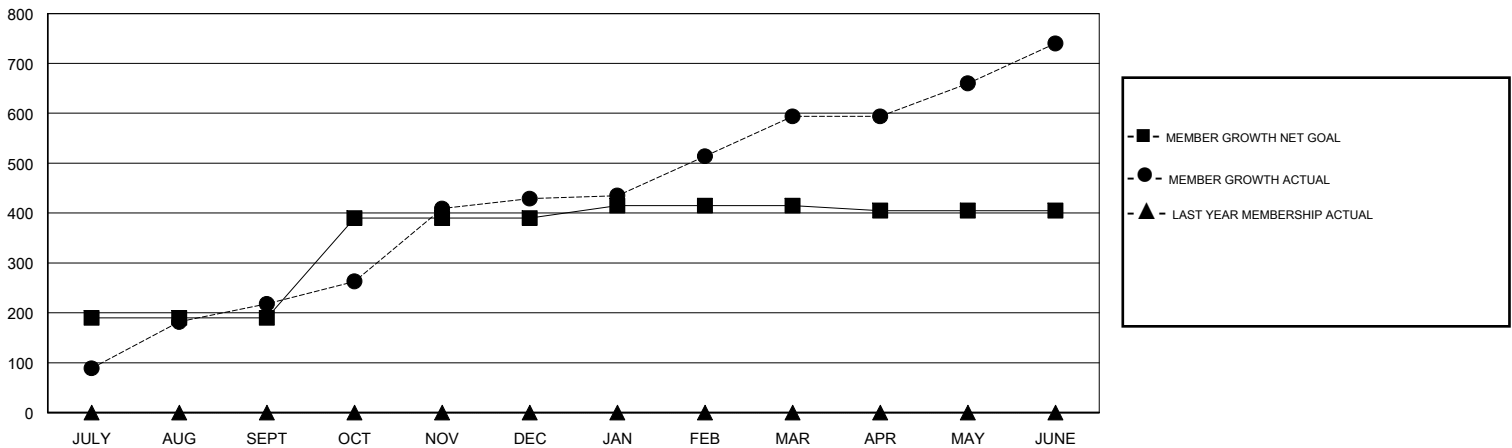
Clubs			
RESULTS FOR 2017-2018			
QUARTER	NEW CLUB GOAL	NEW CLUBS	DROPPED CLUBS
JULY/AUG/SEPT	3	8	0
OCT/NOV/DEC	7	9	2
JAN/FEB/MAR	2	5	0
APR/MAY/JUNE	0	1	1

Members			
RESULTS FOR 2017-2018			
QUARTER	MEMBER GROWTH NET GOAL	MEMBER GROWTH ACTUAL	DROPPED MEMBERS ACTUAL (including transfers)
JULY/AUG/SEPT	190	444	214
OCT/NOV/DEC	200	341	118
JAN/FEB/MAR	25	222	52
APR/MAY/JUNE	-10	680	501

GOALS AND ACTUAL NEW CLUBS CUMULATIVE



GOALS AND ACTUAL MEMBERS CUMULATIVE



DROPPED CLUBS: 3

92 CLUBS OF 112 ADDED 1 OR MORE NEW MEMBERS

GENDER DISTRIBUTION

MALE 2,753 (63.37%)
 FEMALE 1,591 (36.63%)
 Women Percentage Fiscal Year Goal: 35%

DROPPED MEMBERS

[CLICK HERE FOR CUMULATIVE MEMBERSHIP DATA](#)

DECEASED	14
CLUB CANCELLED	33
OTHER	836
TOTAL	883

TOTAL FAMILY UNIT MEMBERS	0
FAMILY MEMBERS PAYING HALF DUES	0